

# The Lynden



Waterfront Exterior



Classic Exterior



Craftsman Exterior

More details at [WayneHomesLakeCollection.com](http://WayneHomesLakeCollection.com)

**WAYNE HOMES®**

— EST. 1973 —

LAKE COLLECTION

1,990 Sq Ft • 3 Bedroom • 2½ Bath • Two-Story

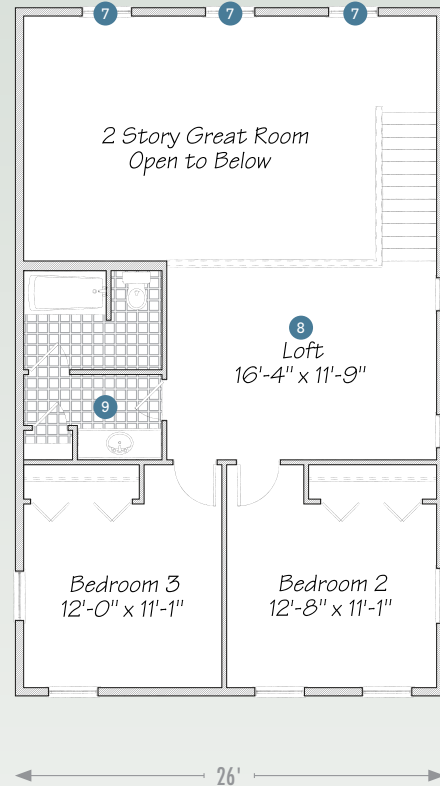
# The Lynden

1,990 Sq Ft • 3 Bedroom • 2½ Bath • Two-Story

## 1<sup>ST</sup> FLOOR



## 2<sup>ND</sup> FLOOR



① The island's eat ledge is perfect for refreshments and grab-and-go snacks.

④ The great room's design opens up views and entertaining possibilities.

⑦ Stacked windows provide two stories of natural waterfront light.

② A walk-in closet to hold all your beachwear and bathing accessories.

⑤ Keep essentials on hand in the walk-in corner pantry.

⑧ The loft is a place for extra bunk beds or an office with some of the best views.

③ A dining room big enough for the whole family ... and another family.

⑥ At the lake, a laundry room isn't a luxury; it's a necessity.

⑨ A separate room for the vanity makes sharing easier.



© Wayne Homes, LLC. This plan, drawing and brochure is the sole and exclusive property of Wayne Homes; it is subject to US Copyright law and registered with the US Copyright Office. It may not be reproduced or copied without the written permission of Wayne Homes. Room dimensions may vary. Prices, availability, and specifications may change without notice.

**WAYNE HOMES®**

EST. 1973

LAKE COLLECTION

EEPTU 0209\_0622