

# The Chesapeake



Waterfront Exterior



Classic Exterior



Craftsman Exterior

More details at [WayneHomesLakeCollection.com](http://WayneHomesLakeCollection.com)

WAYNE HOMES®

— EST. 1973 —

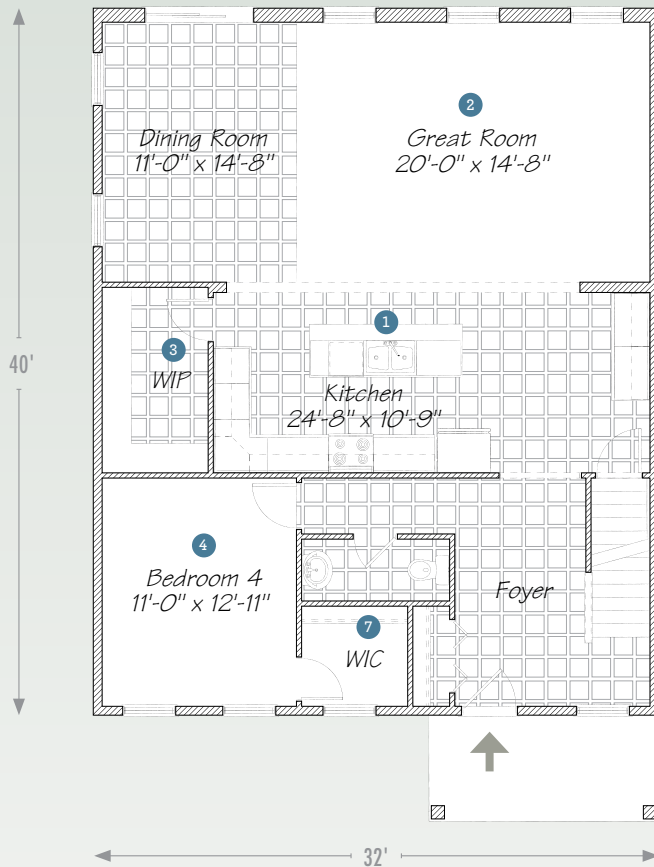
LAKE COLLECTION

2,530 Sq Ft • 4 Bedroom • 2½ Bath • Two-Story

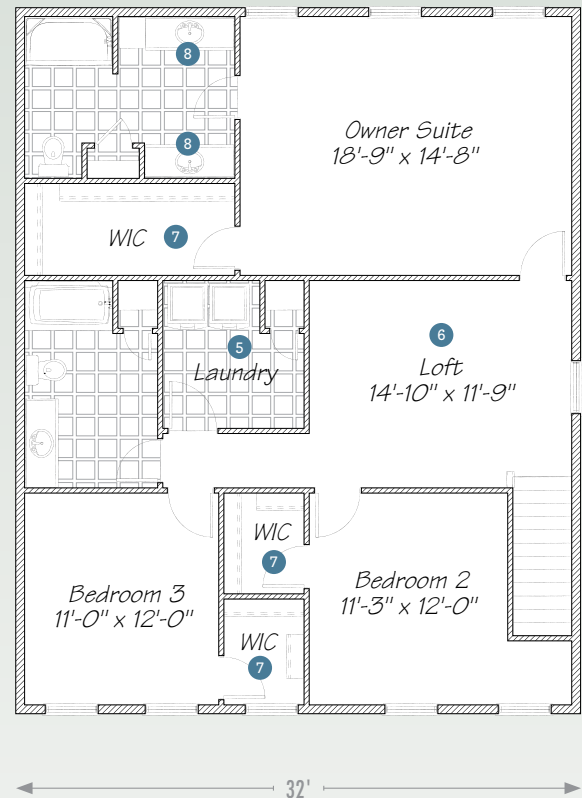
# The Chesapeake

2,530 Sq Ft • 4 Bedroom • 2½ Bath • Two-Story

## 1<sup>ST</sup> FLOOR



## 2<sup>ND</sup> FLOOR



① A big island overlooking the great room, the hub of activity, is front and center.

③ Never run out of, well, anything with this walk-in pantry.

⑤ Keep your friends close and your clothes closer with this central laundry room.

⑦ Everyone deserves their own walk-in closet, so every bedroom gets one.

② The spacious great room works for entertaining or simply relaxing together.

④ The downstairs bedroom can be customized as a second owner suite.

⑥ The loft is a great place for the kids to hang out; you can even add some bunk beds.

⑧ His and hers vanities mean he and she have what they need where they need it.



© Wayne Homes, LLC. This plan, drawing and brochure is the sole and exclusive property of Wayne Homes; it is subject to US Copyright law and registered with the US Copyright Office. It may not be reproduced or copied without the written permission of Wayne Homes. Room dimensions may vary. Prices, availability, and specifications may change without notice.

**WAYNE HOMES**

EST. 1973

LAKE COLLECTION

EEPTU 0209\_0622